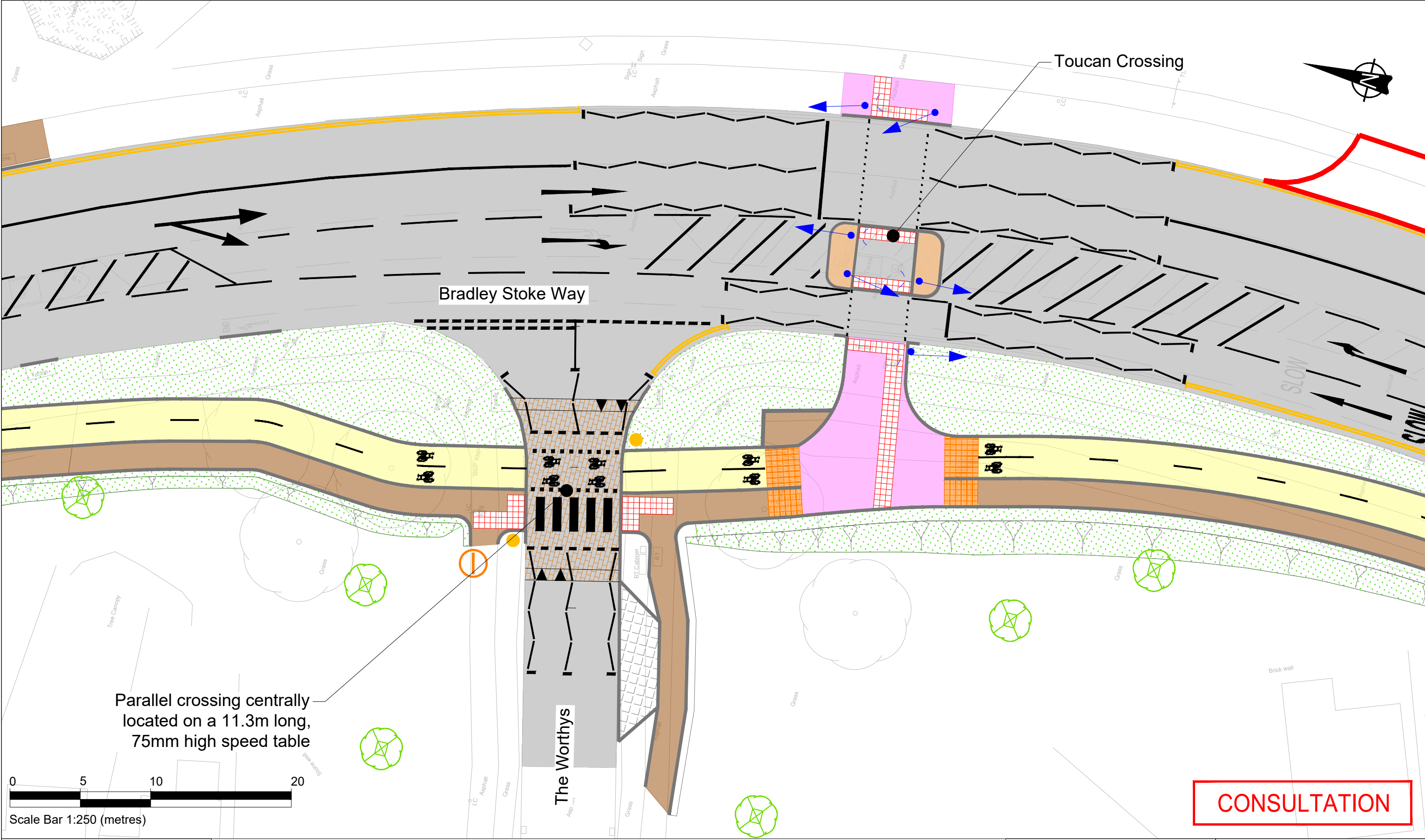




Acad Ref: \\stor1\Shared\02\PT and SE\Broad Lane\Shared\TPN\W\TNS Schemes\T001-General\382 - Bus Corridor Imp A385. Docs & Dwgs\Drawings\T001-382-011.dwg : Plotted on Aug 12, 2025 - 2:16pm



ORDNANCE SURVEY				
© Crown copyright and database rights 2025 Ordnance Survey AC0000807942. This map has been provided for this scheme consultation and must not be used for any other purpose. Only one paper copy may be made for your own use.				
Rev	Description	Drawn	App'd	Date

- Key
-  Traffic Signals
  -  Belisha Beacon (Yellow Globe)



DEPARTMENT OF PLACE  
EXECUTIVE DIRECTOR - PLACE  
Nigel Riglar  
**PLACE OPERATIONS - STREETCARE**  
PO Box 1954  
Bristol, BS37 0DD  
Telephone: 01454 868 000  
Email: TransportServices@southglos.gov.uk

Project					
Bus Corridor Imp A38 Phase 10 - The Worthys / Bradley Stoke Way					
Title					
Crossing Locations					
Scale @ A3		1:250			
Drawn	JR	Checked	MS	Approved	MS
Date	Aug.25	Date	Aug.25	Date	Aug.25
Dwg No.		Parish	Scheme	Number	Rev.
T001		-	382	-	011
					-